

LILLIBRIDGE HEALTHCARE SERVICES

ENHANCED BUILDING OPERATIONS

Effective Immediately May 8, 2020



READY FOR BUSINESS WHENEVER YOU ARE.

The health and safety of our employees and tenants is our top priority. We thank you for your partnership as we work to keep our buildings safe.

Controls and Procedures

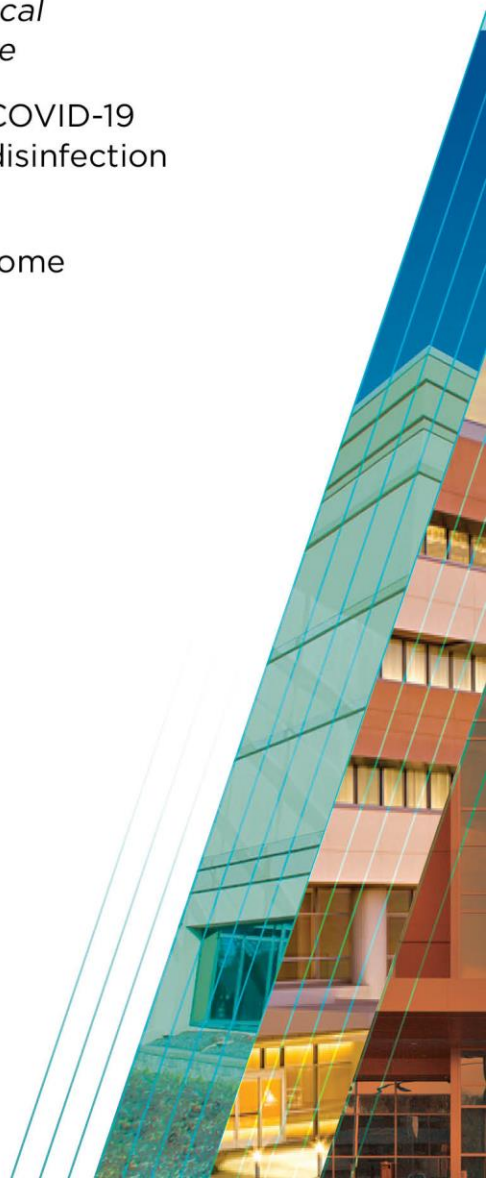
- Face masks are recommended in all public areas, in accordance with Centers for Disease Control (CDC) guidelines

Note: Face masks may be a mandatory requirement in your local jurisdiction. Please check regional requirements as appropriate

- Please continue to report any suspected or confirmed cases of COVID-19 so that we can jointly arrange for the appropriate cleaning and disinfection of affected areas
- Employees who are having symptoms or feeling ill should stay home and seek medical advice

Social Distancing Measures

- Elevator capacity will be limited to four riders per cab; signage will be posted in each elevator bank along with floor decals in each cab indicating where each person should stand
- To alleviate extended elevator wait times, stairwell usage is recommended (where available) for able bodied visitors, using the following guidelines:
 - *No passing in same direction allowed*
 - *Maintain at least three stairs' distance*
 - *Stay to the right of the staircase when ascending or descending. Turn heads away from others when passing*
- Current service request protocol in tenant spaces will continue, limiting maintenance responses to emergencies only while spaces are occupied



CONTINUED...

Cleaning and Hygiene

- Enhanced cleaning and disinfection of high touch areas will continue
- Hand sanitizer stations will be placed strategically in common areas
- We will be posting signage throughout the common areas as reminders to follow CDC hygiene guidelines for everyone's protection and to prevent the virus spread:
 - *Wash hands often with soap and water for 20 seconds or longer*
 - *Avoid touching your eyes, nose or mouth*
 - *Cover your mouth with a tissue or sleeve when coughing or sneezing*
 - *Wear a face mask when in public*
 - *Avoid close contact with others*

Temperature Checks

- If temperature checks/screening are required by jurisdictional order, tenants should follow the State order requirements for individuals entering their space as appropriate

Access Control

- Each of our buildings has an individualized access control procedure. Please follow all appropriate signage and requirements at your building

If you have any questions, please don't hesitate to reach out to your local Lillibridge Property or send your questions to info@Lillibridge.com

www.lillibridge.com

